



RODENT **Fix** BB

BROMADIOLONE 50 BLOCK BAIT 28g

Contains bromadiolone 0.005% w/w and denatonium benzoate 0.001% w/w.



RodentFIX BB is an extremely palatable ready to use poison block that is suitable for all weathers.

The larger 28g size block allows for quicker application. One block can give a brown rat (*Rattus norvegicus*) nearly all its daily food consumption.

After extended research this block only contains food grade wheat flour combined with chopped cereals and alimentary proteins.



Unlike other extruded or moulded blocks the high calibre ingredients and the added chocolate / vanilla aroma of RodentFix BB contributes to substantial bait consumption.

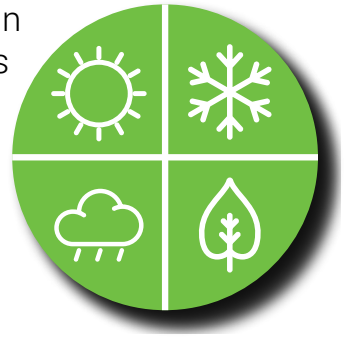


www.pestfix.co.uk
sales@pestfix.co.uk
+44(0)1903 538488

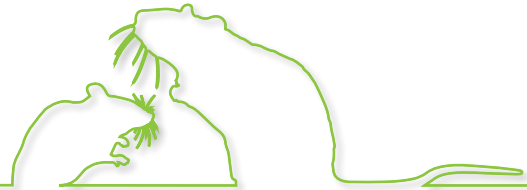
Units 1-3 Cedar Park,
30 Terminus Road, Chichester,
West Sussex, PO19 8GT

RodentFix BB blocks are compressed with edible waxes and contain inhibitors to prevent the growth of mould and bacteria if the block is exposed to damp conditions.

It is the ideal block bait as it can be used in all seasons and weathers and retains it's exceptional palatability.



RodentFix BB is licensed for use in more areas than most. In and around buildings, open areas, waste dumps, sewers and burrow baiting. It is also licensed for use in permanent baiting strategies where necessary



TARGET	LEVEL OF INFESTATION	BAIT POINTS	APPLICATION	ADVICE
MICE (<i>Mus musculus</i>)	Low	Up to 40g every 5 metres	Indoors and outdoors around buildings: tamper resistant bait stations, covered and protected baiting points.	The frequency of visits to the treated area should be at the discretion of the operator, in the light of the survey conducted at the outset of the treatment. That frequency should be consistent with the recommendations provided by the relevant code of best practice. Sites where burrow baiting is used should be visited more frequently than those where secure bait boxes are employed.
	High	Up to 40g every 2 metres		
RATS (<i>Rattus norvegicus</i>)	Low	Up to 200g every 10 metres	Indoors and outdoors around buildings, in open areas, waste dumps and sewers: tamper resistant bait stations, covered and protected baiting points, direct application into the burrow.	
	High	Up to 200g every 5 metres		
RATS IN SEWERS (<i>Rattus norvegicus</i>)		Up to 200g per manhole	Anchored or applied in bait stations, covered and protected bait points.	Baits must be applied in a way so that they do not come into contact with water and are not washed away.



www.pestfix.co.uk
sales@pestfix.co.uk
+44(0)1903 538488

Units 1-3 Cedar Park,
30 Terminus Road, Chichester,
West Sussex, PO19 8GT